



# GRIT TRAP WATER REMOVAL

## Why

The pit water removal procedure aims to ensure each site has the necessary tools and knowledge to properly remove water from our grit trap systems such as conveyor pits, external tank systems, and internal tank systems. Ensuring that the water is removed from these systems enables vendors to be more effective when removing solid waste from the systems.

## What

The following are the items you will need as you complete the process:

### 1. 1.5HP Float-Controlled Sump Pump

A 1.5HP float-controlled sump pump will be used to pump the water out of the systems and into a sanitary drain



### 2. Nylon Rope

A section of nylon rope will be tied to the 5-gallon bucket so that the bucket can be raised and lowered



### 3. Drain Hose

A hose is needed to carry liquids to the nearest sanitary drain. Ensure that the hose used is long enough to reach between the sump pump and the sanitary drain at any and all pump points. The hose diameter will vary depending on the sump pump being used



### 4. Zip Ties

Zip ties will be needed to attach the sump pump power cord to the nylon rope so the power cord doesn't get wet



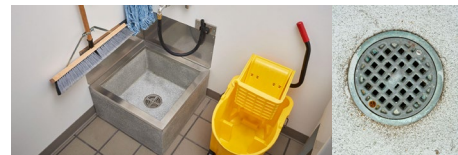
### 5. Extension Cord & 3-Prong Electrical Outlet

An extension cord may be needed to supply power to the sump pump, and a 3-prong electrical outlet will be needed to plug in the sump pump or extension cord



### 6. Floor Drain, Mop Sink, or Oil Separator

To ensure the wastewater stays in the sanitary system and bypasses our grit separation tanks, a floor drain, mop sink, or oil separator will be needed



### 7. Tank Pumping Day Checklist

This form records if the water was properly removed prior to the pumping vendor's arrival as well as before and after photos of the inside of the pump truck's tank. The Tank Pumping Day form can be found in the Quick Links dropdown menu on the Intranet.

**\*\*See full picture on Page 3\*\***



#### Tank Pumping Day Checklist

Name *		
First		Last
Location *		
Date of Tank Pump *		



# GRIT TRAP WATER REMOVAL

## Educate

The water in the grit trap systems should be completely removed on a weekly basis. This helps to avoid excessive buildup and allows us to better identify any potential issues we may have with drainage. Additionally, on weeks that our vendors will be coming to pump the grit trap systems, the systems should only have two-thirds ( $\frac{2}{3}$ ) of the water removed.

## Using the Pump

The following are the steps for using the pump basket:

1. After closing, use the attached rope to slowly lower the pump until it has settled or reached the bottom of the area or tank
  - Ensure that the electrical connections on the sump pump are **NEVER** below the surface of the water
  - Ensure that the sump pump power cord and extension cord connection are **NEVER** underwater
2. Using the excess rope, anchor the pump by tying a knot on a stationary piece of equipment or other fixture
  - Grating, conveyor support, tank lid, etc.
3. Locate the nearest floor drain, mop sink, or oil separator and place the drain hose in the drain
4. Plug in the sump pump and start removing water from the system
  - The float on the pump will allow the pump to shut off automatically once the water level has dropped below the float level
5. The next morning, during the opening, the pump should be removed, cleaned, and stored away before washing customer vehicles

## Vendor Pumping

On the day that the pumping vendor arrives, you will need to complete the *Tank Pumping Day Checklist*.

Before the pumping vendor arrives, ensure that only two-thirds ( $\frac{2}{3}$ ) of the water was removed from the tank. If the water has not been properly removed, pump out as much water as possible before the pumping vendor arrives.

Once the vendor arrives, but prior to pumping, ask the pump truck driver to take a picture of the inside of the truck's tank in order to ensure that it is completely empty. **WhiteWater team members are not allowed to climb on the pump trucks.** If the truck's tank is not empty, contact your Regional Facilities Manager before allowing the vendor to begin pumping. Once the pumping is completed, ask the driver to take another picture of the inside of the truck's tank. Then submit the form.



# GRIT TRAP WATER REMOVAL

## Tank Pumping Day Checklist



## Tank Pumping Day Checklist

Name \*

Location \*

Date of Tank Pump \*

Was the excess water pumped out of the tank?

☐ Yes ☒ No

Water removal procedure:

[https://docs.google.com/document/d/1Ego1CPXE6edZ\\_Fj82IKTDh-h6Ca-vKRfOLtF5r8NAC/edit?usp=sharing](https://docs.google.com/document/d/1Ego1CPXE6edZ_Fj82IKTDh-h6Ca-vKRfOLtF5r8NAC/edit?usp=sharing)

Verify the pumping truck tank is empty. Ask the driver to take a picture of the inside of the pumping truck tank before they start pumping the store's tank

Picture of Pumping Truck Tank Before Pumping \*

or drag files here.

Picture of the Pumping Truck Tank After Pumping \*

or drag files here.

Submit