

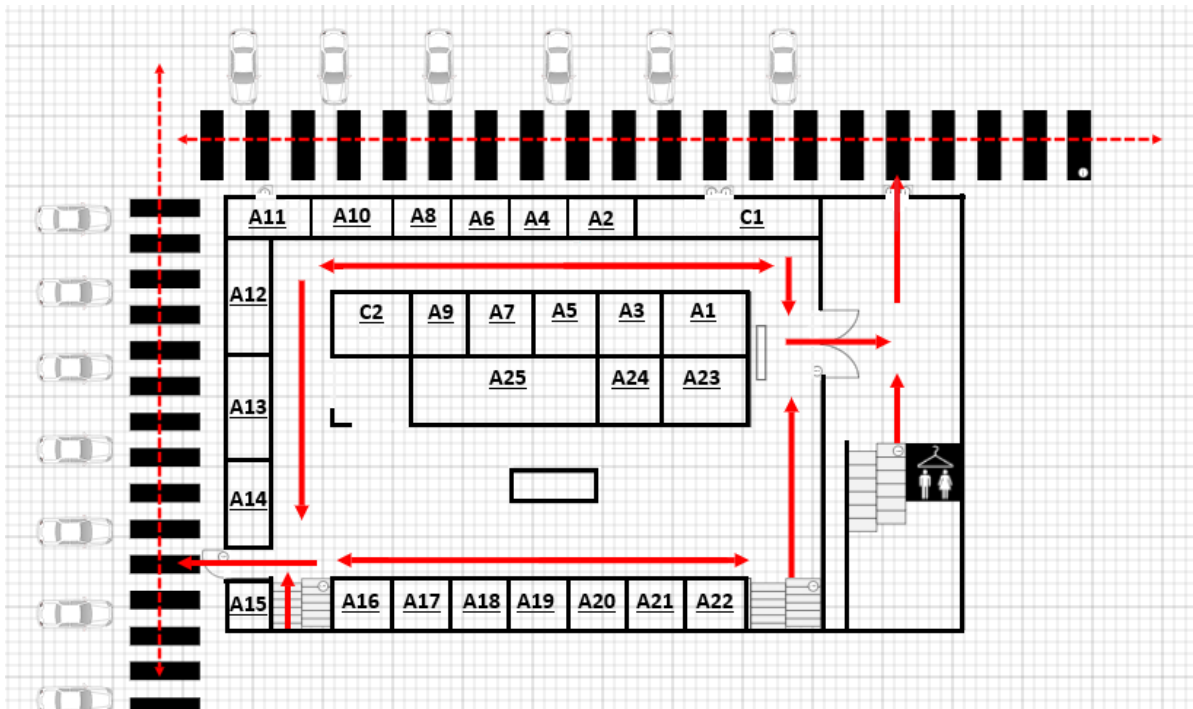
Evacuation Plan Overview

We've created detailed diagrams highlighting evacuation routes and emergency assembly areas in case we ever need to evacuate the corporate office. Here are the key points:

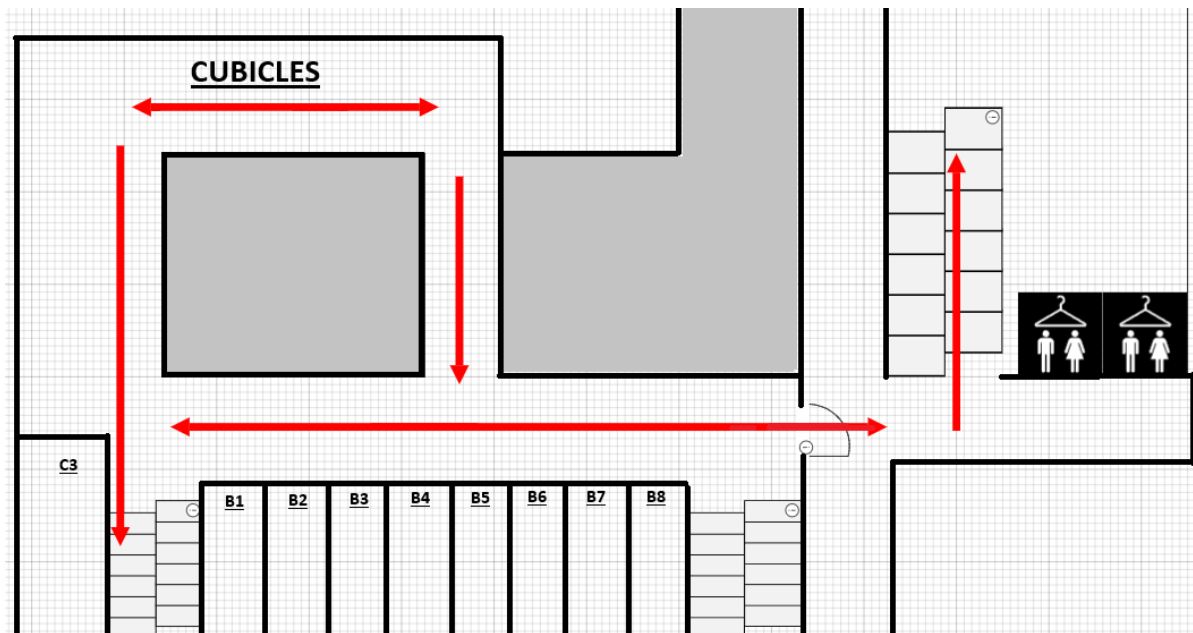
- **Evacuation Routes:** Multiple routes are shown; in an emergency, please use the safest and shortest route to reach the nearest emergency assembly area.
- **Department Responsibility:** Department heads, please ensure your entire team evacuates promptly and conduct headcounts at the assembly areas.

Per local fire code, all personnel must exit the building and proceed to the nearest assembly area any time the fire alarm sounds.

Floor 1 Evacuation Routes



Floor 2 Evacuation Routes



Evacuation Plan - Assembly Points

